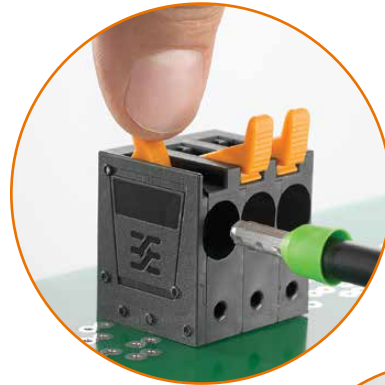


OMNIMATE[®] Power Terminal LUF and LUFS 10.00

Fast and Reliable Connection of Power Electronic Devices

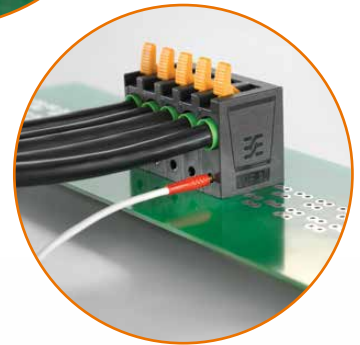
Two Handling Options

Both LUF and LUFS 10.00 feature Weidmüller's PUSH IN connection system for wiring of solid or ferruled wires from 18AWG to 6AWG with optional tool free actuating lever (LUFS) or screw driver push-button actuated clamp (LUF).



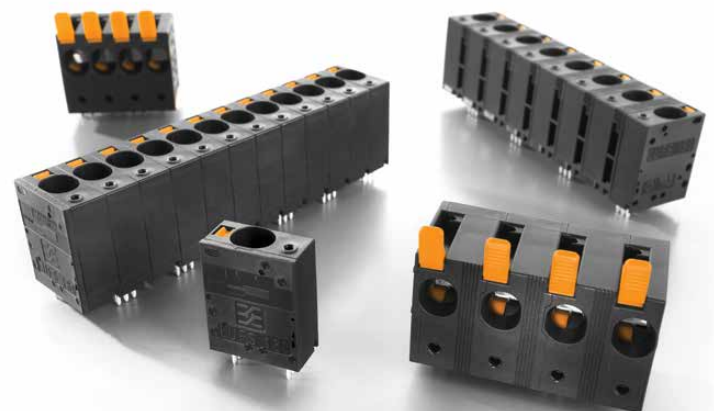
High System Integrity

From easily accessible diagnostic testing points to wire connection with low force to the circuit board, the LUF and LUFS 10.00 terminals ensure the integrity of the PCB board and the electrical connection.



Suitable for High Power Applications

LUF and LUFS 10.00 are UL/CSA rated for up to 61A and 600V according to UL 1059. Specific ratings apply for the commercial, general industrial and industrial device groups.



Reliability by Design

The PUSH IN contact system closes automatically after being opened, ensuring that the wire is always safely connected.



Let's connect.

www.weidmuller.com

Weidmüller

Applications

For high power device applications where reliable components with increased safety features for high voltage are required, such as drive controllers, radio base stations and photovoltaic inverters.

Connection of
1 - Power Supply and
2 - Motor Connections



Drive Controllers

Connection of
1 - Power Supply and
2 - Cross Connections






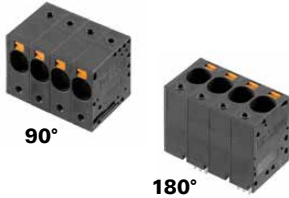
Radio Base Stations

Connection of
1 - DC Input and
2 - AC Output



Photovoltaic Inverters

Featured Product Types

Variant - Image	Push In Actuation	Wire Gauge	Poles	Pins per Pole	Pitch mm/in	Pin Length mm/in	 	
							Part No.	Part No.
LUF								
	Lever	18...6 AWG	1	4	10/.3937	5/.1969	1988590000	N/A
	Lever	18...6 AWG	2	4	10/.3937	5/.1969	1988600000	N/A
	Lever	18...6 AWG	3	4	10/.3937	5/.1969	1988610000	N/A
	Lever	18...6 AWG	4	4	10/.3937	5/.1969	1988620000	N/A
	Lever	18...6 AWG	5	4	10/.3937	5/.1969	1988630000	N/A
	Lever	18...6 AWG	6	4	10/.3937	5/.1969	1988640000	N/A
	Lever	18...6 AWG	7	4	10/.3937	5/.1969	1988650000	N/A
	Lever	18...6 AWG	8	4	10/.3937	5/.1969	1988660000	N/A
	Lever	18...6 AWG	9	4	10/.3937	5/.1969	1988670000	N/A
	Lever	18...6 AWG	10	4	10/.3937	5/.1969	1988680000	N/A
	Lever	18...6 AWG	11	4	10/.3937	5/.1969	1988690000	N/A
	Lever	18...6 AWG	12	4	10/.3937	5/.1969	1988700000	N/A
	Lever	18...6 AWG	2	2	10/.3937	5/.1969	2453690000	N/A
	Lever	18...6 AWG	3	2	10/.3937	5/.1969	2453700000	N/A
	Lever	18...6 AWG	4	2	10/.3937	5/.1969	2453710000	N/A
	Lever	18...6 AWG	5	2	10/.3937	5/.1969	2453720000	N/A
	Lever	18...6 AWG	6	2	10/.3937	5/.1969	2453730000	N/A
	Lever	18...6 AWG	7	2	10/.3937	5/.1969	2453740000	N/A
	Lever	18...6 AWG	8	2	10/.3937	5/.1969	2453750000	N/A
	Lever	18...6 AWG	9	2	10/.3937	5/.1969	2453760000	N/A
Lever	18...6 AWG	10	2	10/.3937	5/.1969	2453770000	N/A	
Lever	18...6 AWG	11	2	10/.3937	5/.1969	2453780000	N/A	
Lever	18...6 AWG	12	2	10/.3937	5/.1969	2453790000	N/A	
LUFS								
	Push Button	18...6 AWG	1	6	10/.3937	5/.1969	2500560000	2491810000
	Push Button	18...6 AWG	2	3	10/.3937	5/.1969	2499430000	2492110000
	Push Button	18...6 AWG	3	3	10/.3937	5/.1969	2500460000	2492120000
	Push Button	18...6 AWG	4	3	10/.3937	5/.1969	2500470000	2492130000
	Push Button	18...6 AWG	5	3	10/.3937	5/.1969	2500480000	2492140000
	Push Button	18...6 AWG	6	3	10/.3937	5/.1969	2500490000	2492150000
	Push Button	18...6 AWG	7	3	10/.3937	5/.1969	2500500000	2492160000
	Push Button	18...6 AWG	8	3	10/.3937	5/.1969	2500510000	2492170000
	Push Button	18...6 AWG	9	3	10/.3937	5/.1969	2500520000	2492180000
	Push Button	18...6 AWG	10	3	10/.3937	5/.1969	2500530000	2492190000
	Push Button	18...6 AWG	11	3	10/.3937	5/.1969	2500540000	2492200000
	Push Button	18...6 AWG	12	3	10/.3937	5/.1969	2500550000	2492210000

4 Pins per Pole - UL/CSA: 61A/300V
 2 Pins per Pole - UL/CSA: 58A/600V

6 Pins per Pole - UL/CSA: 61A/600V
 3 Pins per Pole - UL/CSA: 58A/600V

Information

Information is available for download on the web at www.weidmuller.com.

Weidmuller, Canada

10 Spy Court
 Markham, Ontario L3R 5H6
 Telephone: (800) 268-4080
 Facsimile: (877) 300-5635
 Email: info1@weidmuller.ca
 Website: www.weidmuller.ca

Weidmuller, Mexico

Bldv. Hermanos Serdán 698,
 Col. San Rafael Oriente
 Puebla, Puebla, Mexico
 C.P. 72029
 Telephone: 01 222 2686267
 Facsimile: 01 222 2686219
 Email: clientes@weidmuller.com.mx
 Website: www.weidmuller.com.mx

Weidmuller, United States

821 Southlake Blvd.
 Richmond, Virginia 23236
 Telephone: (800) 849-9343
 Facsimile: (804) 379-2593
 Email: info@weidmuller.com
 Website: www.weidmuller.com